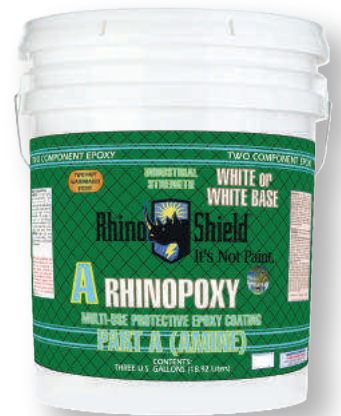
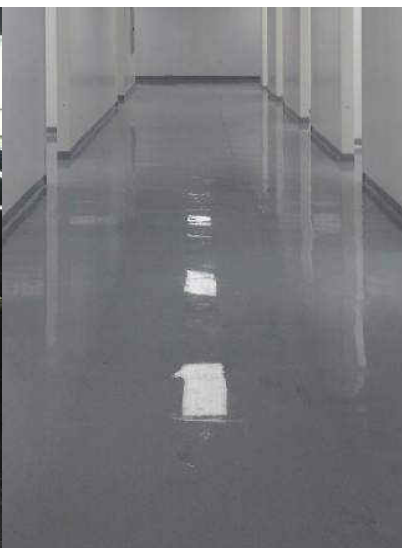




# Rhinopoxy



**RHINOPOXY** is a two part, water-borne epoxy. Unlike traditional epoxies, this water based epoxy is eco-friendly, low odor, and easy to apply. **RHINOPOXY** provides a high-gloss, hard finish that can protect a wide variety of surfaces. **RHINOPOXY** is tintable and benefits include chemical/solvent resistance and excellent hide.





# Rhinopoxy

## USES

**RHINOPOXY** should only be used in covered spaces and should not be applied to areas with direct sunlight exposure. **RHINOPOXY** is ideal for surfaces continually cleaned or exposed to water. Common uses include pipes, tanks, shower stalls, locker rooms, concrete walls/floors, hospitals, restaurant kitchens, packing plants, car wash bays, restrooms, schools, railings, manufacturing equipment and parking garages.

## OVERVIEW

- ✓ Residential
- ✓ Industrial
- ✓ Interior
- ✓ Floors
- ✓ Walls
- ✓ Tiles
- ✓ Driving Surfaces

## TECHNICAL DATA

FINISH	High Gloss
COLOR	Tintable
VEHICLE TYPE	Epoxy/ Amine
SOLIDS BY WEIGHT	50% +/- 2%
SOLIDS BY VOLUME	40% +/- 2%
V.O.C.'S (averages)	1.87 lbs/gal, 224 g/liter
SPREAD RATE	200 to 300 sq.ft./gal
DRY TO TOUCH	4 hours
RECOAT	12 to 24 hours
CURE TIME	24 hours
CURE TIME TO WALK	36 hours
GALLON WEIGHT	10.1 lbs +/- .3 lbs

*\*All data times are based on ambient temperatures of 77 degrees Farenheit and relative humidity of 50%*

## BENEFITS

- May Be Used in Areas of High Traffic
- Seals Out Water
- Withstands Thousands of Cleanings
- Beautiful Gloss Finish, Endless Color Options
- Highly Durable
- Easy to Apply
- Able to be Driven On (Hot Tire Pickup)
- Corrosion Control

